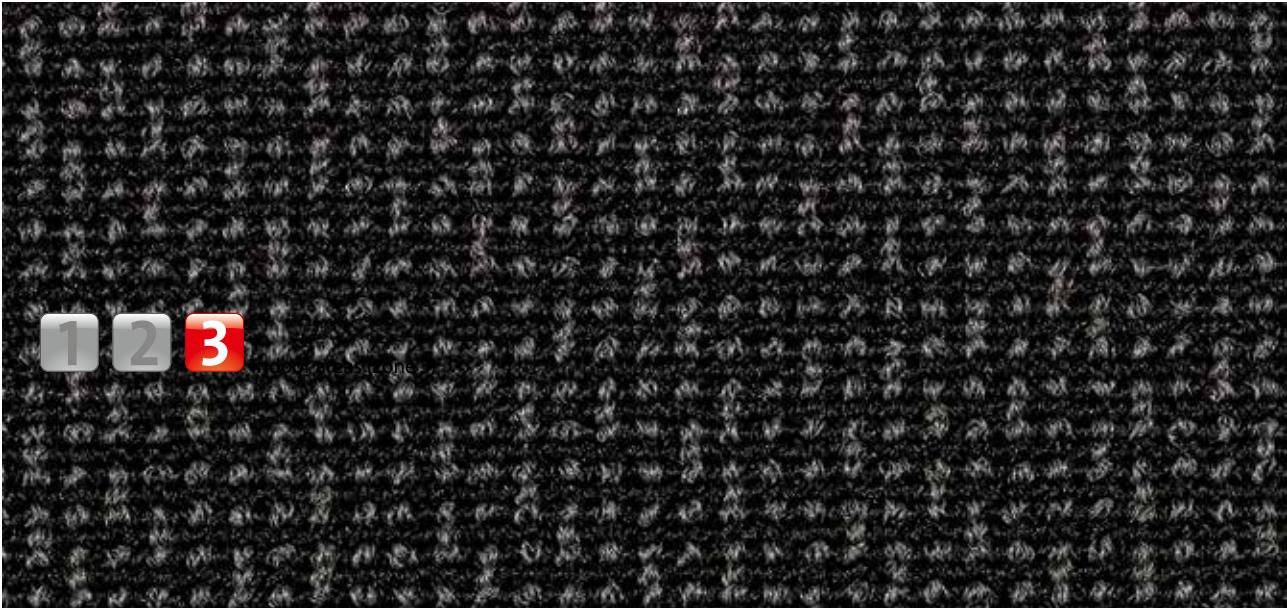


# Model CONTURA



**Description**

A sophisticated clean-off with four eye-catching designs for a special surface effect. The dark appearance and strong textures create a distinctive impression.



Anti-static



DS (EN 13893)



Resistant strength



Cfl-s1



Comfort level: simple



Highly suitable for property

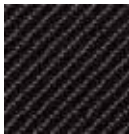
**Colours**



17.01 check



17.02 transverse



17.03 diagonal



17.04 check-cut

# Model CONTURA

<b>Construction</b>	woven 2-frame
<b>Pile above substrate</b>	100% polyimide combined with fibrilised monofilaments
<b>Substrate material</b>	PES, PP, CO, CV
<b>Backing material</b>	Ethylene vinyl acetate
<b>Pile weight / fibre weight</b>	750
<b>Total weight (g/m<sup>2</sup>)</b>	1900
<b>Overall height (mm)</b>	7
<b>Tuft density/m<sup>2</sup></b>	90000
<b>Slip resistance</b>	DS (EN 13893)
<b>Certificates</b>	CE conformity EN 14041 (rolls only)
<b>Supplied as rolls</b>	200 cm wide (no border)
<b>Product characteristics</b>	Soiling and moisture absorption
<b>Laying</b>	Individual rolls or smaller coverings can be laid loose on any smooth floor. For larger areas, and allowing for on-site conditions, we recommend fixed laying with an adhesive suitable for plasticised PVC.
<b>Cleaning</b>	Dirt removal with powerful brush vacuum cleaner. The spray extraction process is recommended for periodic basic cleaning. Cleaning with plenty of water is absolutely no problem, water temperature should not be above 40°C. Do not use chlorinated hydrocarbon (Tetra).
<b>Brand</b>	emco

Subject to technical modifications